

# Southern Seawater Desalination Project



JUNE-JULY 2010 NEWSLETTER

## Revegetation Works

*The first run of revegetation works has started onsite with Landcare Services recently spending a couple of weeks planting seedlings and scattering seeds on the berm.*

As part of our commitment to the community, the eight metre high berm (earth embankment) was built around the southern / eastern boundary of the site to create a visual and noise barrier. Revegetating the berm will help to reduce the noise emissions and sight line of the plant.

While it would be ideal to plant semi-mature trees on the berm, extensive consultation told us to increase survival rates, it would be more effective to plant seedlings and scatter seeds.

Landcare Services has been using a burrowing machine to assist with seed germination over of 16,000 seeds.

Revegetation works will also shortly commence in the north-west corner of the site as part of our state and federal commitments.

If you are taking a walk along the beach, you may notice signage advising of revegetation works around the dunes and rehabilitation to improve dune stability.

Landcare Services will return next year and repeat the berm revegetation process dependant on the success rate. Repair works will also then been undertaken along the possum corridor.



*Landcare Services with seedlings for the berm.*

## Operating Licence

*Before construction commenced onsite numerous approvals were required including a construction 'Works Approval' from the Department of Environment and Conservation (DEC).*

With construction reaching the mid-way point, the Water Corporation has now applied to the DEC for the 'Operating Licence', which dictates what and how the plant complies with our approvals once it starts up.

As some of you may be aware, the DEC advertised a 21 day comment period on this application in the West Australian on 26 July 2010. As this is a DEC managed process, all enquiries must be directed to the regional DEC office (Bunbury) on 9725 4300 or visit [www.dec.wa.gov.au](http://www.dec.wa.gov.au)

# Harvey Summit Tank Update



*View over the tank site.*



*Pipe laying commences at the site.*



*View looking west over the tank site.*

***The Harvey Summit Tank project team is pleased to announce that all drill and blast work is now complete!***

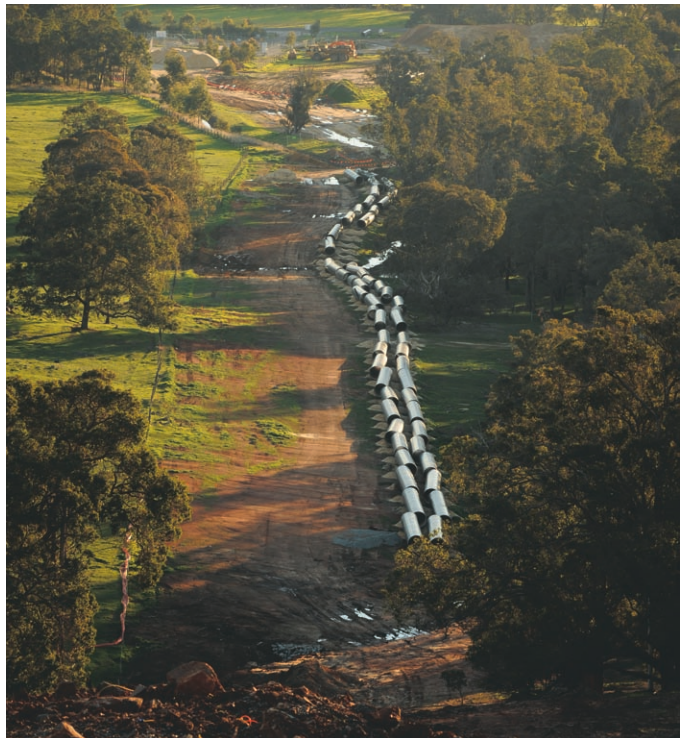
In excess of 100,000 m<sup>3</sup> of clay and rock was removed from the steep sides of the summit to enable the placement of engineered fill for the tanks foundation to be built on.

The project is now facing its next challenge with the complex construction of the engineered fill on the tank pad and benches. Even with the inclement weather experienced to date, the earthworks crew has achieved excellent production rates.

The pipe laying crew has now mobilized to site and begun installing the pipe work under and surrounding the tank.

Once complete, this will open the door for the commencement of the concrete works, commencing with the concrete encasement of the pipe work under the tank and then moving towards the construction of the tank base.

From the team amongst the rolling hills and dairy cows!!



*Pipes ready to be installed up to the tank.*

## Connecting Pipeline

***Works are progressing well with 26km's of the 28km connecting pipeline constructed.***

Pipe laying on the remaining 2km's has stopped due to inclement weather and works are now focused on thrust boring under the roads and hydro-testing.

# Around the site

*Onsite, works are now rapidly ramping-up on the mechanical and electrical component of the project. In excess of 200 personnel are expected to be working on mechanical and electrical installation over the coming months.*

Specifically mechanical and electrical installation started in the micro-filtration (MF) building in late June and is due to start in the reverse osmosis (RO) building in early September.

Structural works are still underway for the RO building with more than 450 precast panels being erected. The large number of panels is due to the 'pump room' being constructed internally within the larger main building... basically there is a building within a building. The pump room will house the noisy components of the process elevating the noise emissions for both workers and the nearby community.

Works are also well underway on the drinking water tank and other components of the potabilisation area as well as the administration building.



*Potabilisation Area including lime and CO<sup>2</sup> storage.*



*Micro-filtration units.*



*Drinking water tank.*

## Marine Works

*The project's critical marine works reached another significant milestone this month with the successful removal of the Tunnel Boring Machine (TBM) used to tunnel the first seawater intake tunnel.*

Tunnelling is now underway on the diffuser pipe with an expected completion date in mid-September.

While our tunnelling contractors spend the day underground out of the weather, our marine contractors are enjoying this unusual dry, warm spell as they prepare the retrieval pit for the second TBM.

Weather dependant, our 340 metre diffuser pipe, which is currently floating in the Bunbury Port, is scheduled to be towed and sunk off the coast during August.



*340 metre diffuser pipe.*

# Community Reference Group



CRG at the Harvey Summit Tank site.

*Welcome to the two newest members of the Community Reference Group, Bruce Jones and Graeme McPherson of Myalup.*

Bruce and Graeme have filled the voids left by Dave Brindle (although some time back now) and Adele Given.

Our exiting member Paul Atherton is now a Binningup community member representative after stepping down as Binningup Community Association President.

All members continue to do a fabulous job representing their communities and community groups and we thank each and everyone for their continued dedication.

Above is an image from their recent site visit to the Harvey Summit Tank Site.

From all reports, I think they would be more than happy to hold their monthly meetings at this amazing location!

To view the contact details of your Community Reference Group members visit [http://www.watercorporation.com.au/D/desal2\\_crg.cfm](http://www.watercorporation.com.au/D/desal2_crg.cfm)



Whale spotted near our barge.

## Whales spotted

*On 27 July our marine observers spotted, what we believe to be, two Humpback Whales frolicking off the shores directly in front of our site.*

Spotters reported the two whales were only 25 metres from our marine barges and were mischievously playing with one another.

Inline with commitments, marine operations stopped until the whales moved on!

Don't forget if you see a whale and would like to add to our marine data collection, call 1800 810 075 or email [desalination@watercorporation.com.au](mailto:desalination@watercorporation.com.au)



Close up of passing whale