

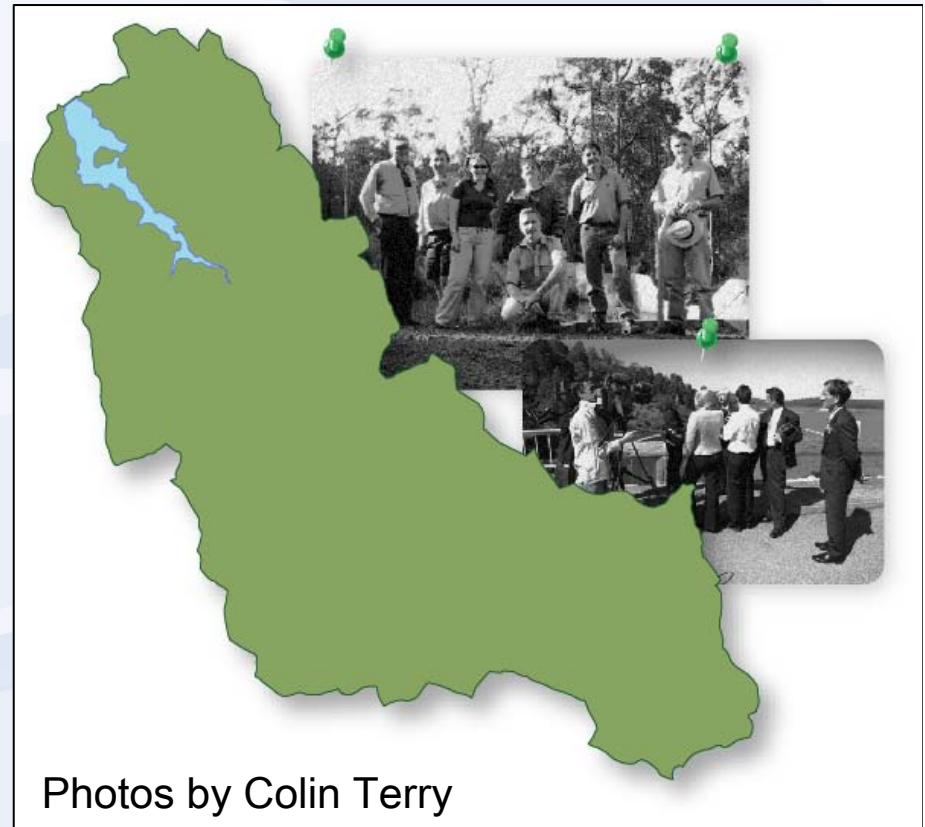


# Wungong Catchment Environment and Water Management project

Dr Colin Terry  
16 May 2006

# Introduce

- Project
- This seminar
- Legacy



# Thinning improves forest and run-off

Change forest structure towards a mature state



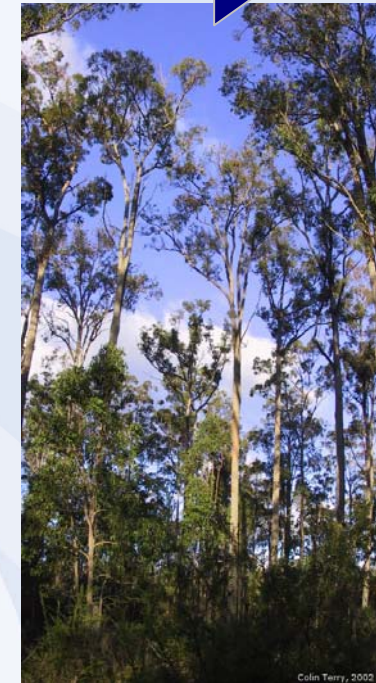
Mature forest (c. 1895)

**Good water run-off**



Regrowth forest (now)

**Poor run-off**

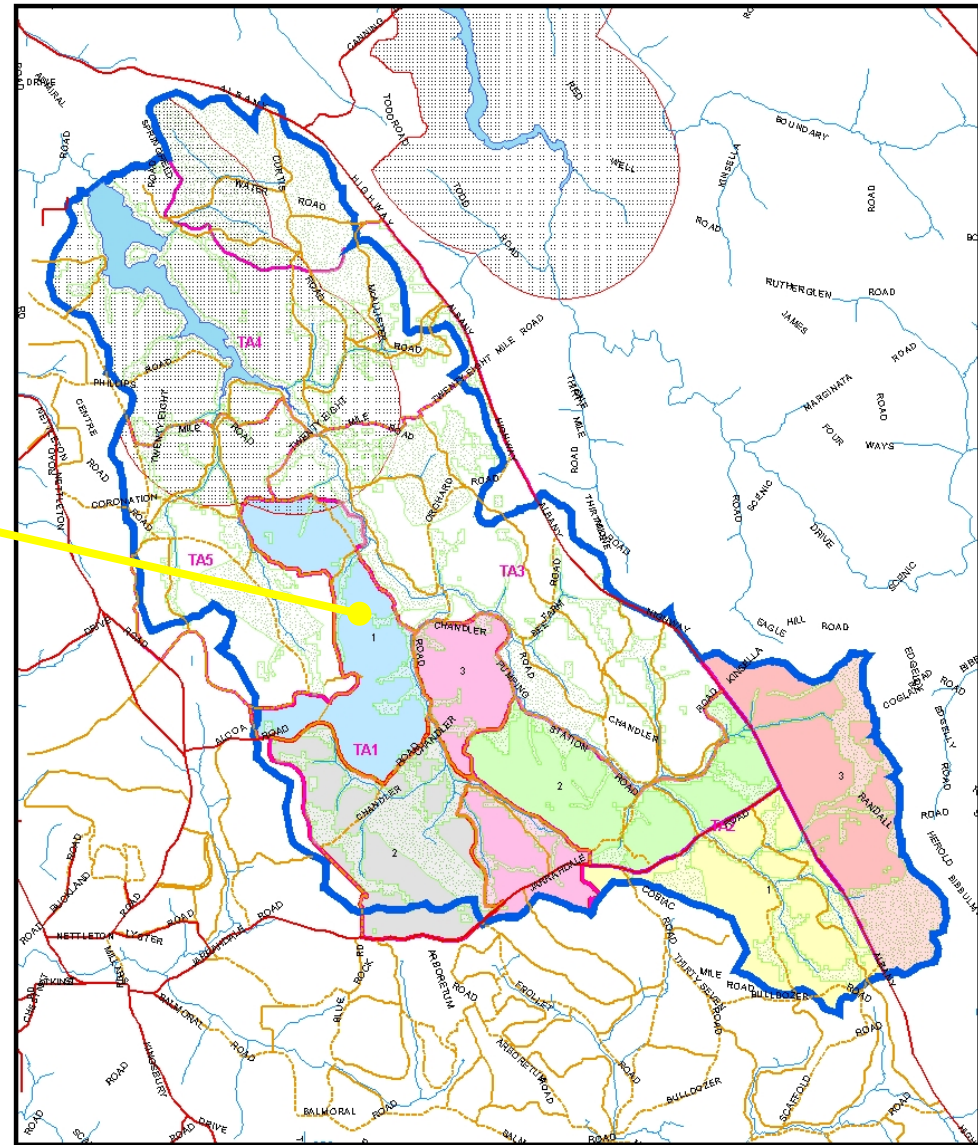


Actively managed forest

**Improved run-off**

# Work progressing as planned

- Coupe 1 of treatment area 1: dieback interpreted, demarcated and advance burnt
- Native trees in coupe 1 has been tree marked
- Thinning started 19 April 2006



## Legend

Treatment zones	protected areas	Reservoir Protection Zone
<b>TA1 coupes</b>	<b>TA2 coupes</b>	Wungong catchment boundary
1	1	Reservoir
2	2	Stream
3	3	Large road
		Minor road
		Secondary road

## Wungong Catchment treatment and protected areas



Data from range of sources including  
 Alcoa World Alumina Australia,  
 Department of Water, Department of Land Information,  
 Department of Conservation and Land Management



# Project about people, not pipes

**Today** is about getting to know

- Researchers and their role
- Research project scope (not details)



# Programme

- 8:30 am open
- Speakers
- **10:30 – 11:10 am morning tea**
- More speakers
- **1:00 – 2:00 pm lunch**

# Project legacy

- What will be left when the forests are healthier and the streams flow relatively more?
- Looking back at similar projects we see a
  - Spirit of co-operation
  - Community understanding
  - Improved management
- Australia, and maybe the world, is watching
- You are all part of an icon project - enjoy

