



Wungong Catchment Environment and Water Management project

Introduction to environmental research in catchment

Frank Batini
16 May 2005

Wungong Catchment – a mosaic

- ◆ 130 km² catchment area
- ◆ logged up to four times
- ◆ no old growth forest
- ◆ plantations 4 km²
- ◆ mined 27 km² (20%)
- ◆ dieback affected > 60 km²
- ◆ dieback rehab 10 km²

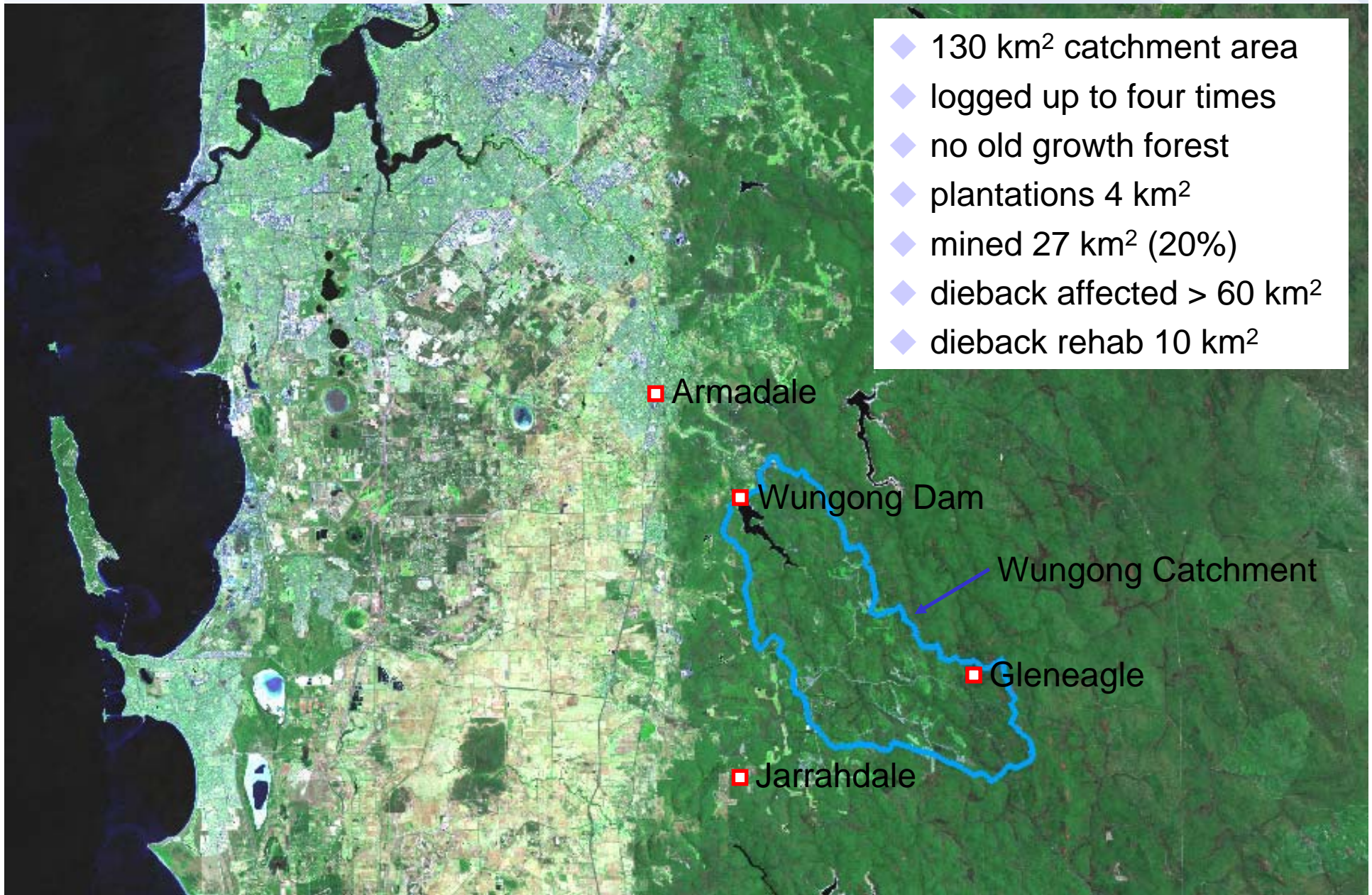
■ Armadale

■ Wungong Dam

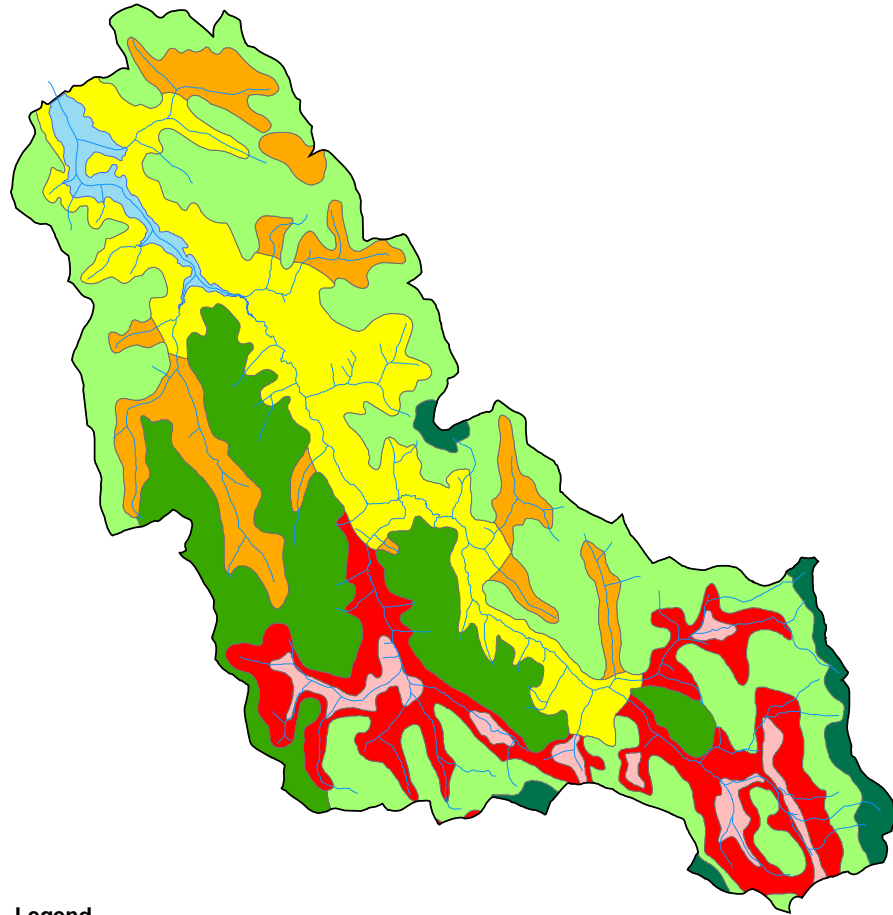
Wungong Catchment

■ Gleneagle

■ Jarrahdale










The information contained herein is subject to ongoing review and amendments and should be read in conjunction with the associated report



Legend

Vegetation Classes

-  Cooke
-  Dwellingup 1
-  Dwellingup 2
-  Murray 1
-  Swamp
-  Yarragil 1
-  Yarragil 2

Wungong Catchment Matiske-Havel (1998) Vegetation Complexes



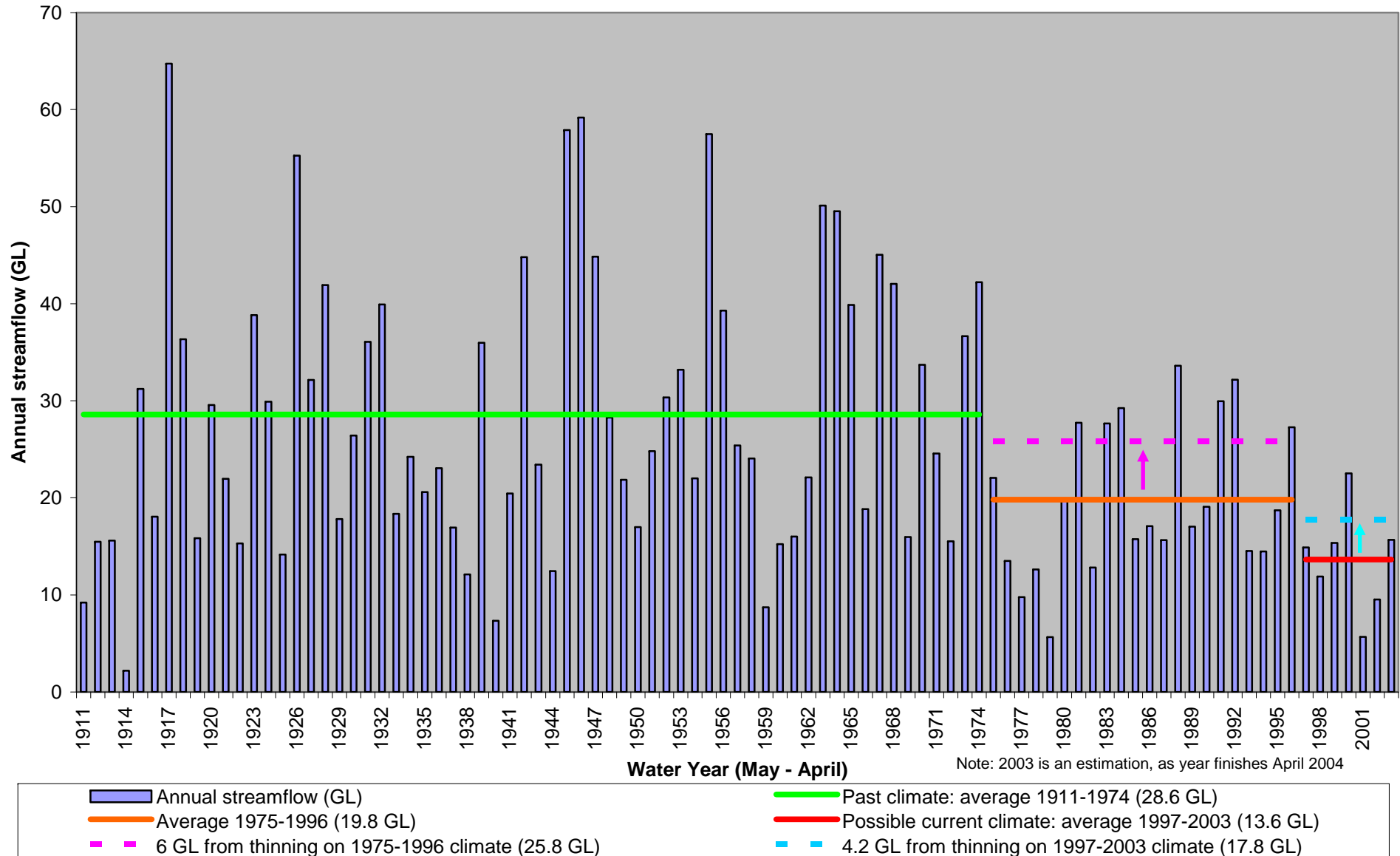
Data obtained from Department of Conservation and Land Management and Department of Environment

Matiske-Havel vegetation complexes

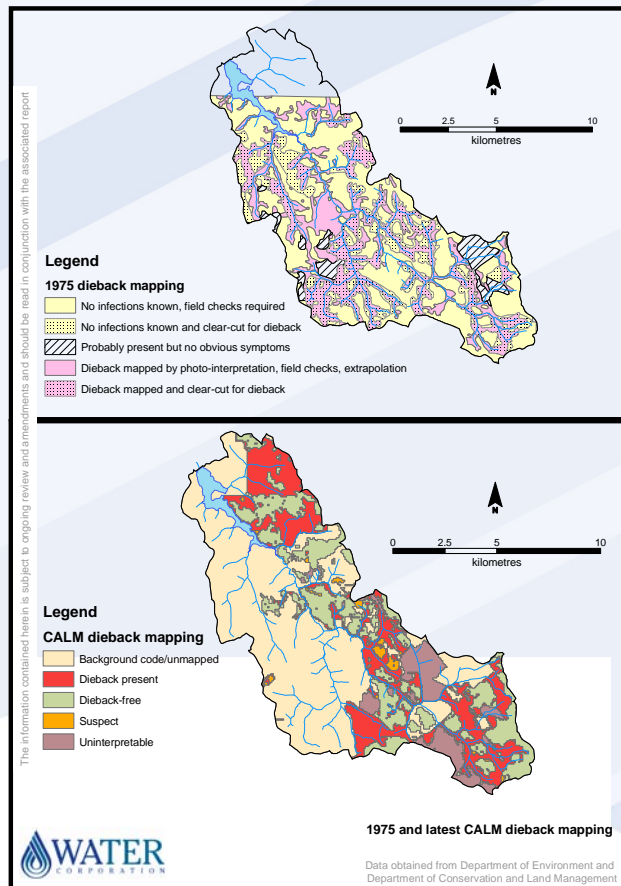
Wungong Catchment

Wungong Catchment streamflow

Impact of proposal on streamflow for different climate scenarios



Some previous research



- 1960s – dieback mapping, dieback rate of spread studies, dieback ecology
- 1970s – soil and land capability mapping, economic evaluation of land uses
- 1980s – modelling land use changes and water yield, stream fauna studies
- 1960s to 2005 – hydrology studies of mining and rehabilitation, leaf areas
- 1970s to 2005 – studies of bauxite mining and rehabilitation eg. flora, fauna, fire, establishment, dieback forest rehabilitation, thinning

Questions?



Photo by Colin Terry (epicormic growth on burnt wandoo in Little Darkin)