

MUNDARING WATER TREATMENT PLANT

THIRD DELIBERATIVE FORUM
24 JULY 2006

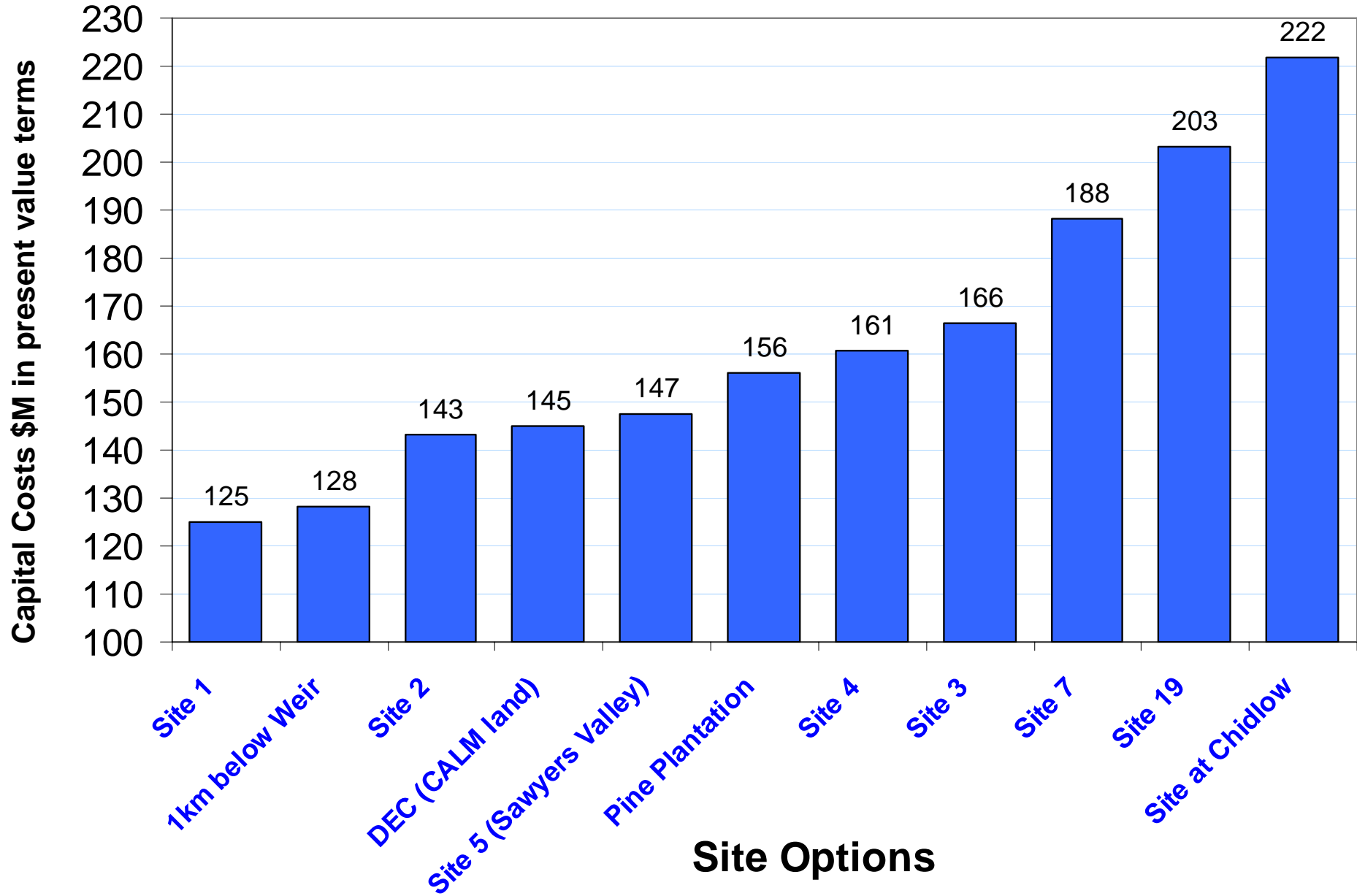


Cost of Site Options

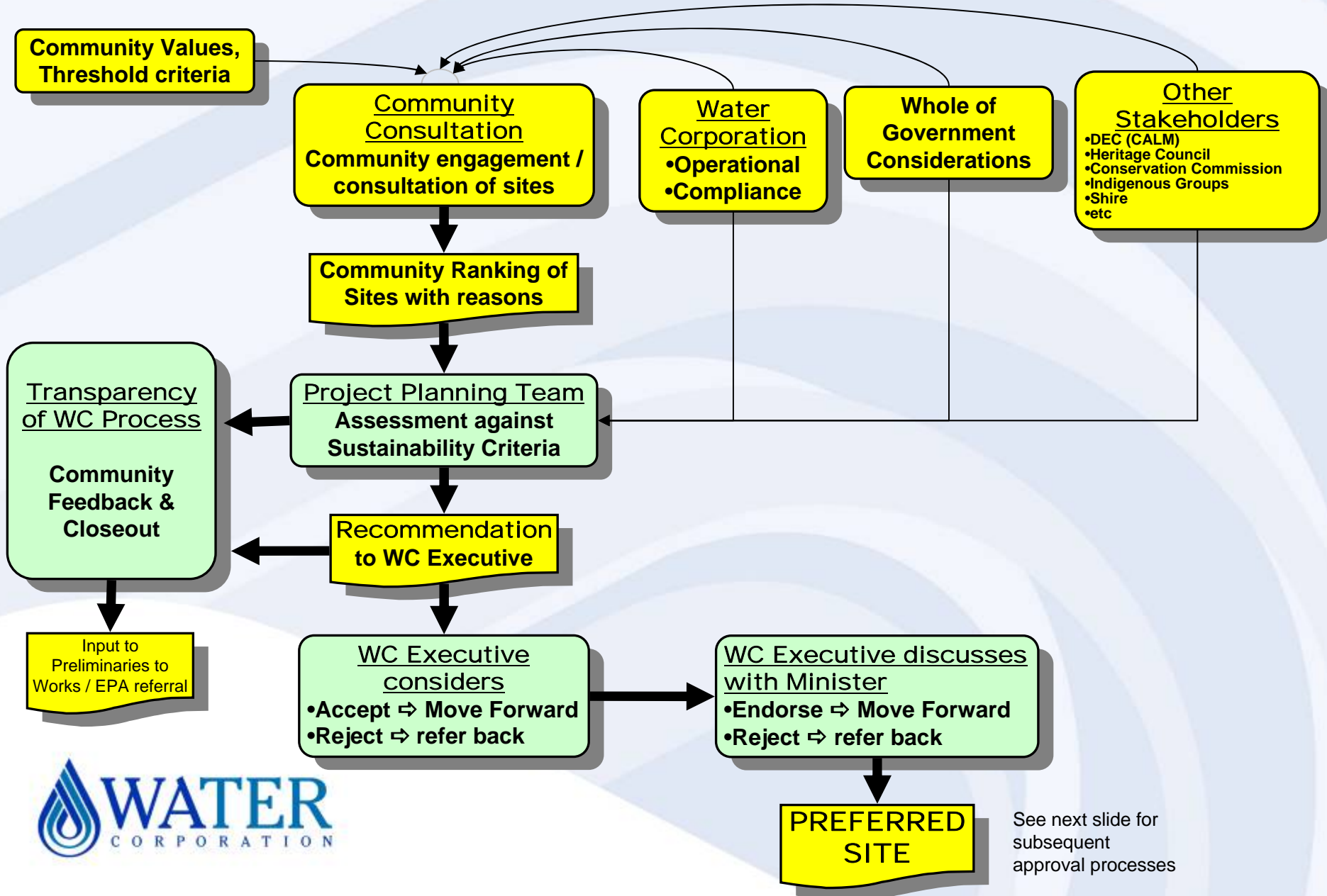
SITE OPTIONS	Capital \$M	Operating \$M	Total \$M
Site 1	125	158	283
1km below Weir	128	158	286
Site 2	143	158	301
DEC (CALM land)	145	158	303
Site 5 (Sawyers Valley, Pine Plantation)	147	158	305
Site 4	161	158	319
Site 3	166	158	324
Site 7	188	158	346
Site 19	203	159	362
Site at Chidlow	222	159	380

Mundaring Water Treatment Plant Sites

Capital \$M (present value)



Overview of Final Site Selection Process



Process for Preferred Site

