

Proposed Water Treatment Plant

SEVENTH DELIBERATIVE FORUM
27 NOV 2006

Objectives of this Forum

- Filter the Sites to a smaller number
- On the smaller number of sites, seek individual assessment

Outline of Seventh Forum

Sessions	Who	Approx duration
Introductions/Welcome	CPenter	5 mins
Explanation of Process	CPenter, RNg	10 mins
Session One – Filtering Sites to a Smaller Number	All	45 mins
Refreshment Break	All	15 mins
Session Two – Detailed Assessment	All	60 mins
Where to from now	CPenter	20 min
Complete workbook to provide feedback/information	All	10 mins

Session One

Filtering the Sites to a smaller number

- Each participant to decide which **criteria** should be used to filter the sites
 - E.g. no site to be considered if private land owners are unwilling to sell, no site in National Park, etc
- The task for each participant is
 - “for each criteria should the site be considered for further assessment”
 - Answer Yes or No
- Each participant is to attempt to make a decision about which sites should be considered for further assessment and which sites should not
- Results then will be collated.

Session One

Filtering of Sites to a smaller number

Fill in your name, signature & other details

Name: _____

Signature: _____

Are you a registered forum member ? Yes/No _____

Group: _____

Cost	Land Tenure	Site	Essential					Important		Should the site be considered for further assessment? Yes/No
			Safety for Residents	No compulsory acquisition of Private property	Least disruptive & Best Practice Infrastructure	Least Environment Impact	Limit Amenity impact for residents	Social, heritage & cultural	Economic and financial	
\$125 M	WC's Reserve	Site 1	Y	Y						Y
\$128 M	National Park	1 km below Weir	Y	Y						Y
\$143 M	National Park, RPZ	Site 2	Y	Y						Y
\$145 M	Part DEC & part state forest	DEC (CALM land)	Y	Y						Y
\$147 M	National Park	Site 5 (Tank Hill)	N	Y						Y
\$150 M	State forest	O'Connor Site	Y	Y						Y
\$156 M	State forest, RPZ	Pine Plantation	Y	Y						Y
\$161 M	Private Property	Site 4	N	N						N
\$166 M	Private Property	Site 3	N	N						N
\$188 M	WC's Property	Site 7	N	N						N
\$203 M	Private property	Site 19	N	N						N
\$222 M	Private property	Site at Chidlow	N	N						N

Decide whether the sites should be considered for further assessment.

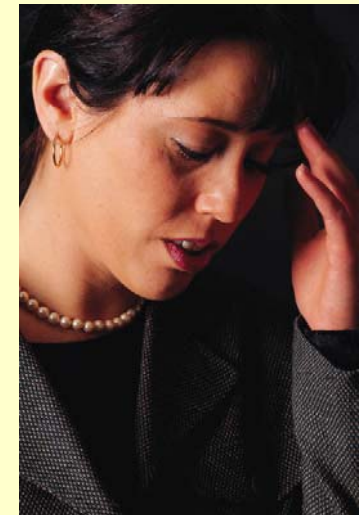
Answer
 "yes" or "Y" or
 "no" or "N"

Circle the criteria that you want to use to

Session Two

Detailed Assessment of Sites

- On the smaller number of sites, each **participant** will be requested to assess each site using all the criteria
- A rating scale 1 to 5 will be used
- Instruction on the rating scale will be provided



Session Two

Detailed assessment of a smaller number of Sites

Fill in your name, signature & other details

Name: _____
 Signature: _____
 Are you a registered forum member ? Yes/No _____
 Group: _____

Step 1
 In this column, tick the sites that you have selected in the Session One.

Step 2
 Assess only the sites you have selected (tick in the first column) using the rating scale below. Use all the criteria.

The computer will do that when Water Corporation analyses the results.

Cost	Land Tenure	Site	Please tick the sites that you have selected in Session One	Essential						Important		My Total	Your thoughts. Please give any thoughts you have about your selected sites. Include anything you think is relevant to the selection or that you think should be taken into consideration when considering this site. If you need more space write at the back of this sheet.
				Safety for Residents	No compulsory acquisition of Private property	Least disruptive & Best Practice Infrastructure	Least Environment Impact	Limit Amenity impact for residents	Social, heritage & cultural	Economic and financial	Status of Sites (National Parks, RPZ)		
\$125 M	WC's Reserve	Site 1	✓										
\$128 M	National Park	1 km below Weir	✓										
\$143 M	National Park, RPZ	Site 2	✓										
\$145 M	Part DEC & part state forest	DEC (CALM land)	✓										
\$147 M	National Park	Site 5 (Tank Hill)	✓										
\$150 M	State forest	O'Connor Site	✓										
\$156 M	State forest, RPZ	Pine Plantation											
\$161 M	Private Property	Site 4											
\$166 M	Private Property	Site 3											
\$188 M	WC's Property	Site 7											
\$203 M	Private property	Site 19											
\$222 M	Private property	Site at Chidlow											

Tick the sites you have derive from Session One

Assess the sites you have ticked using the rating scale here

Note:
 The higher the score the more you like the site.

Rating Scale	1	2	3	4	5			
1	very unsafe	significant impact	substantial disruption	significant impact	significant impact	significant impact	most expensive	significant impact
2								
3								
4								
5	very safe	no impact	no disruption	no impact	no impact	no impact	cheapest	no impact

Where to from here

- Processing of results by Water Corporation
- On-going communication

Processing of Results by Water Corporation

- WC to collate and analyse results of Forum
- WC to prepare raw data summary for independent verification
- Independent verification mechanism provided - Facilitator, Advisory Group
- Information used to identify an initial ranking of sites (with reasons) for further deliberation in 2007



Communicate Outcome of Forum

- Results fed back to the Forum participants for information and comment
- Results distributed to all registrants and wider community
- Results reviewed and discussed at first Forum in 2007 along with WC's assessment of the sites identified by the Forum for more detailed assessment
- Discussion and Deliberation to identify site options