

creating a waterwise verge garden

There are many verge lawns that aren't being utilised even though a lot of time is spent watering, fertilising, mowing and weeding them. In most cases, a verge garden planted with low water use and low maintenance plants is a much better option than lawn. Fortunately, converting a verge lawn into a waterwise and attractive garden is not difficult or expensive. Here are a few tips to get you started.

consult your local council

Remember the verge is owned and managed by your local council and they have a duty of care to ensure public safety and access is not jeopardised. To help you many councils have literature on how to convert a verge lawn safely, often called "Verge Treatment Guidelines". The guidelines include helpful hints, suggested plants and much more. Some councils even have "Plants for Residents Schemes" and other support programs that could help you convert your verge.

remove your existing lawn

There is no need for you to spend time and potentially a lot of money digging up your lawn and carting it away. The nutrients and organic matter contained in the lawn, underground root system and adjacent soil are too valuable to throw away.

The easiest way is to kill the lawn using a herbicide with glyphosate as the active ingredient, once it is dead, the lawn will breakdown and feed your new plants. Please carefully follow the instructions on the label.

Common mistakes that often lead to poor results include:

- Your lawn is not actively growing – the faster your lawn grows the better the herbicide will work. If planning to convert your verge, don't turn off your irrigation until you have sprayed the lawn with herbicide.
- Remember to disconnect or disable the irrigation for the verge once you have sprayed the lawn – your water savings will start immediately.
- In order to kill your lawn completely use the exact amount of herbicide that is recommended on the label. Using more or less can result in failure to kill the entire plant, roots and all.
- Don't mow your lawn one week prior or at all after you have sprayed it with herbicide.
- Don't spray the herbicide on a windy day or if rain is likely.

- Spray herbicide evenly and ensure complete coverage using markers as a guide to where you have sprayed.
- Be patient! If you have followed the instructions the lawn will be dead in around three weeks. After three weeks spot spray any weeds or sprigs of lawn that may appear.

design

While you are waiting for the lawn to die, draw up a draft design for your new waterwise verge garden and select the plants. Visit watercorporation.com.au to choose plants to suit your garden and region with our Waterwise Plants for WA directory. This is a great online resource, which allows you to select a number of criteria to search an extensive database of waterwise plants and provide a list of suitable plants for your location. Remember your council will have a height limit for what you can plant on the verge, so make sure to consult the council guidelines. As a guide, it is best to plant groundcovers or low shrubs with a maximum height of approximately 60cm.

planting

Once you have selected your plants head to your local Waterwise Garden Centre, go to watercorporation.com.au to find one near you. Don't forget to buy soil improver at the same time.

Remember, there is no need to remove the dead turf, all you need to do is dig out a hole for the new plant. The hole should be at least four times wider than the pot. Incorporate organic matter into the planting hole before placing the plant in position. Remaining material from the original hole can be spread adjacent to the plant.

watering

If you have chosen the appropriate waterwise plants and are planting in autumn or winter when seasonal rain will water the plant while its roots are establishing, then there may be no need for watering after you have watered them in at planting. The simplest and cheapest way is to hand water if necessary, but don't be too generous with your watering. The aim is to encourage the plants' root systems to spread far and wide to get them ready for our dry, hot summers.

mulching

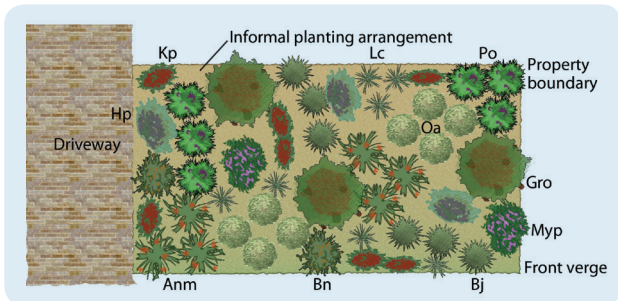
Once all the plants are in position and the irrigation is installed, then the area should be mulched with waterwise mulch to a depth of 5 to 10cm.



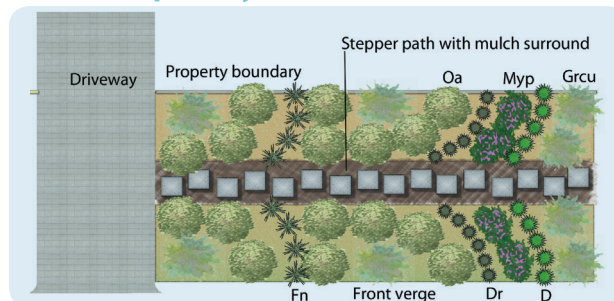
how to design a waterwise verge garden

Sit back and wait for your verge to become a patchwork quilt of colour, with any of the designs below. It will still require some maintenance, but much less than before and it will certainly need less water, less fertiliser and definitely won't require any mowing.

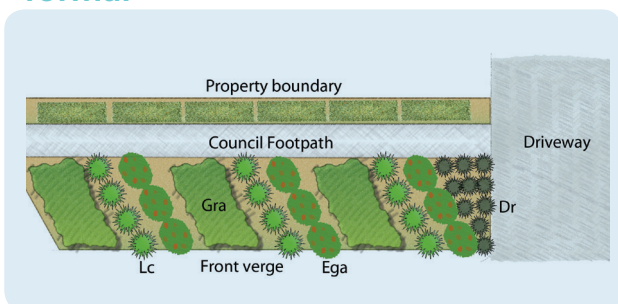
informal



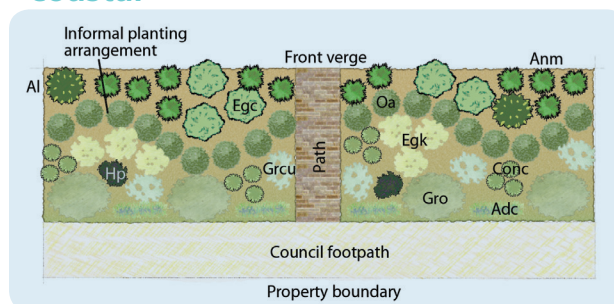
contemporary-modern



formal



coastal



Designs provided by Josh Byrne & Associates
www.joshbyrne.com.au

plant species

Abrv	Common Name	Botanical Name	Abrv	Common Name	Botanical Name
Low Shrubs			Grasses/Strappy Leaf Plants		
Bn	Honeypot Dryandra	<i>Banksia nivea</i>	Conc	Grey Cottonheads	<i>Conostylis candicans</i>
Al	Acacia lasiocarpa	<i>Acacia lasiocarpa</i>	Myp	Creeping Boobialla	<i>Myoporum parvifolium</i>
Oa	Olearia 'Little Smokie'	<i>Olearia axillaris</i>	Anm	Kangaroo Paw	<i>Angiozanthus manglesii</i>
Wd	Westringia 'Jervis Gem'	<i>Westringia dampieri</i>	Po	Native Iris or Purple Flag	<i>Pattersonia occidentalis</i>
Ground Covers			D	Dianella 'Silver Streak'	<i>Dianella</i>
Hp	Snake Bush	<i>Hemiandra pungens</i>	Dr	Dianella 'Little Rev'	<i>Dianella revoluta</i>
Gro	Grevillea 'Gin Gin Gem'	<i>Grevillea obtusifolia</i>	Fn	Knotted Club Rush	<i>Ficinia nodosa</i>
Grcu	Grevillea 'Flat Jack'	<i>Grevillea curviloba</i>	Lc	Little Con	<i>Lomandra confertifolia</i>
Adc	Adenanthos 'Coral Carpet'	<i>Adenanthos cuneatus</i>	Bj	Bare Twig-rush	<i>Baumea juncea</i>
Egc	Eremophila 'Compactum'	<i>Eremphila glabra</i>			
Kp	Running Postman	<i>Kennedia prostrata</i>			
Myp	Creeping Boobialla	<i>Myoporum parvifolium</i>			
Ega	Eremophila 'Amber Carpet'	<i>Eremophila glabra</i>			

more information

For professional advice, visit our website to find a Waterwise Specialist near you. They include Garden Designers, Garden Centres, Garden Irrigators, Irrigation Design Shops, Landscapers, Lawnmowing Contractors, Plumbers and Water Auditors. Waterwise Specialists have been trained especially to help you save water by providing specialist advice on waterwise products and services for your home and garden.

Look for the Waterwise Approved and Smart Approved WaterMark symbols when choosing gardening products such as mulch, plants, greywater systems and sprinklers.



13 10 39 Waterwise Helpline
watercorporation.com.au

ISBN 1 74043 629 6 December 2011 This information is available in alternative formats on request.