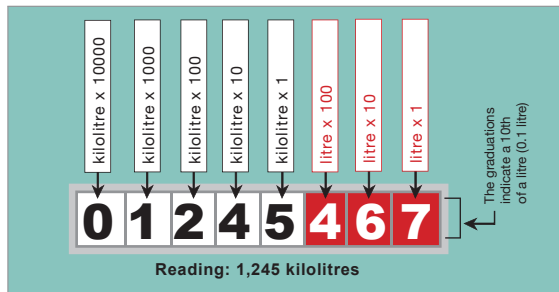


How to read your water meter

Read the black numbers from left to right. The black numbers represent kilolitres and the red numbers represent litres.

Reading your water meter and keeping a simple record of your water use can help you save water and reduce your charges.

NB: (1000 litres equals 1 kilolitre).



Please note: The number of red numbers may vary.

If you detect a leak, visit watercorporation.com.au to find your nearest waterwise specialist.

Did you know?

A stuck toilet cistern can use over 1000 litres in one hour. Over the course of a year a leak of this size will waste over 10 million litres of water, enough to fill four Olympic sized swimming pools.



You can also visit our website
www.watercorporation.com.au

This information is available in alternative formats on request.

Printed on environmentally friendly paper.
ISBN 1 74043 6172 October 2010



Seek a Leak

Find out how to seek those leaks...
and how to fix them fast.



Seek a Leak

Leaks mean that our State's precious water, and your precious money, is literally going down the drain. Even a hairline fracture in a pipe could cause a noticeable increase in water use, yet still be unseen above ground. Here's how to seek those leaks...and how to fix them fast.

STEP 1 Locate your water meter

Generally, your water meter will be at the front of your property, just inside the boundary. If you have a large site you may have more than one meter.

If you're not sure of the location of your meter, you can call 13 13 85 for assistance.

STEP 2 Test for leaks

Being aware of leaks

Simply looking for leaks can be a good strategy for detecting them.

Be aware of:

- Dripping taps
- Sticking buttons on toilets
- Areas that are always wet even when not used

Places in your grounds that are significantly greener than surrounding areas or that are spongy underfoot may also be something to investigate.

Leak detection test

Your water meter is a useful tool that can be used to perform a basic leak test. By recording your water usage last thing at night when you close for the day, and then first thing in the morning before you open, you can identify whether there is any unexplained use.

If you have substantial, consistent water use overnight this might be indicative of a leak and should be investigated further. Another possibility to explain overnight water use is that an automated irrigation system is scheduled to come on. If you have unexplained water use overnight, turn off your irrigation controller and repeat the test.

How to check for leaks

1. Ensure no water is being used on site.
2. Record your water use at the meter last thing at night.
3. Next day, record your water use first thing in the morning.
4. If a lot of water is used over night, investigate further.
5. Repeat for a week to see if there is a pattern.

Monday PM	Tuesday PM	Wednesday PM	Thursday PM	Friday PM	Saturday PM
Tuesday AM	Wednesday AM	Thursday AM	Friday AM	Saturday AM	Sunday AM
Calculate Difference	Calculate Difference	Calculate Difference	Calculate Difference	Calculate Difference	Calculate Difference

Other tips

There are a number of things that you can do to stop leaks:

- Regularly inspect storage tanks for leaks. Visible leaks, constant wet patches and very green grass or moss growing can be signs of leaks.
- Frequently test irrigation systems for leaks. Irrigation systems can often be the highest water user by far on a site and leaks in these systems are often costly. They are usually scheduled to run when there may be no one on site to notice a leak.
- Perform routine inspections of wet areas (eg: amenities and kitchen areas) to look for leaks.
- Regularly service and check water regulating equipment and devices which use a float valve to shut off water supply when a tank is full (eg: evaporative air conditioners, pool balance tank, irrigation tanks).

Remember, a leak wastes water 24 hours a day, 7 days a week, 365 days a year. Even small leaks can add up to significant water use over the course of a whole year. This can represent a significant cost to you and the environment.

STEP 3 Seek that leak



If you suspect the presence of a leak and are unsure of how to proceed, a Waterwise Auditor or Waterwise Plumber can help. To find the list of Waterwise Specialists go to the 'Being Waterwise' link on the Water Corporation's website at watercorporation.com.au or call the Waterwise Helpline on 13 10 39.