

creating a waterwise

south west



The information in this brochure is tailored to the South West. This covers the Perth Metropolitan, Peel, South West and Great Southern Regions - including Perth, Albany and Esperance.

native garden

Australia has very rich and diverse flora. However, not every native plant is suitable for the home garden. Over the past few years considerable advances have been made in selecting plants, forms and cultivars that are suitable for ornamental horticulture. As a result there is now a very wide range of native plants available, most of which will also attract birds to your garden. What's right for your garden will depend on the size and style of your garden and the overall effect you want to achieve. For your native garden to be successful and rewarding you will usually need to carry out soil improvement prior to planting, mulch after planting, and install an efficient irrigation system.

soil improvement

Soil improvement should be carried out prior to planting. The best soil improver is organic matter. It dramatically increases the moisture and nutrient holding capacity of sandy soil and encourages the all important soil micro fauna that are vital for healthy plant growth.

Improving the soil is a simple process:

- Dig a hole 25 to 30cm deep and, at a minimum, 3 times the width of the pot. The wider the better.
- Replace half the soil with organic matter.
- Mix thoroughly and replace in the hole in a shallow saucer shape.
- Take the plant out of the pot and place in the bottom of the saucer.
- Water in well, applying a wetting agent if necessary.
- Organic matter can be purchased as compost, soil improver or soil conditioner.

In addition to organic matter, the following can also be incorporated into the soil at planting time:

- Bentonite clay (sandy soils only).
- Gypsum (reactive clay soils only).
- Spongelite and zeolite (all soil types).
- Water storage polymers sold as granules or in sealed bags.

mulching

Bare soil encourages weeds, wastes water and increases stress upon plants. A waterwise mulch spread to a depth of 5 to 10cm will reduce evaporation from the soil surface. It will also prevent erosion, reduce weeds, reduce temperature fluctuation in the soil, slowly break down over time to feed the soil and improve the overall appearance of the garden. A good waterwise mulch is one that has large, chunky pieces that hold little, if any, water. Always keep mulch just clear of stems and trunks and be prepared to spread more mulch over the surface as the material breaks down to feed the soil.

irrigation

The most efficient irrigation systems are those that deliver the right amount of water to the right place, at the right time, with minimal wastage. The simplest and most efficient system available to the home gardener is known variously as sub-irrigation, integrated dripper or in-line dripper. It is simple to install and delivers water directly to the root system with little or no evaporative loss. For further information and expert assistance contact your local Waterwise Garden Irrigator or Waterwise Irrigation Design Shop.

hydrozoning

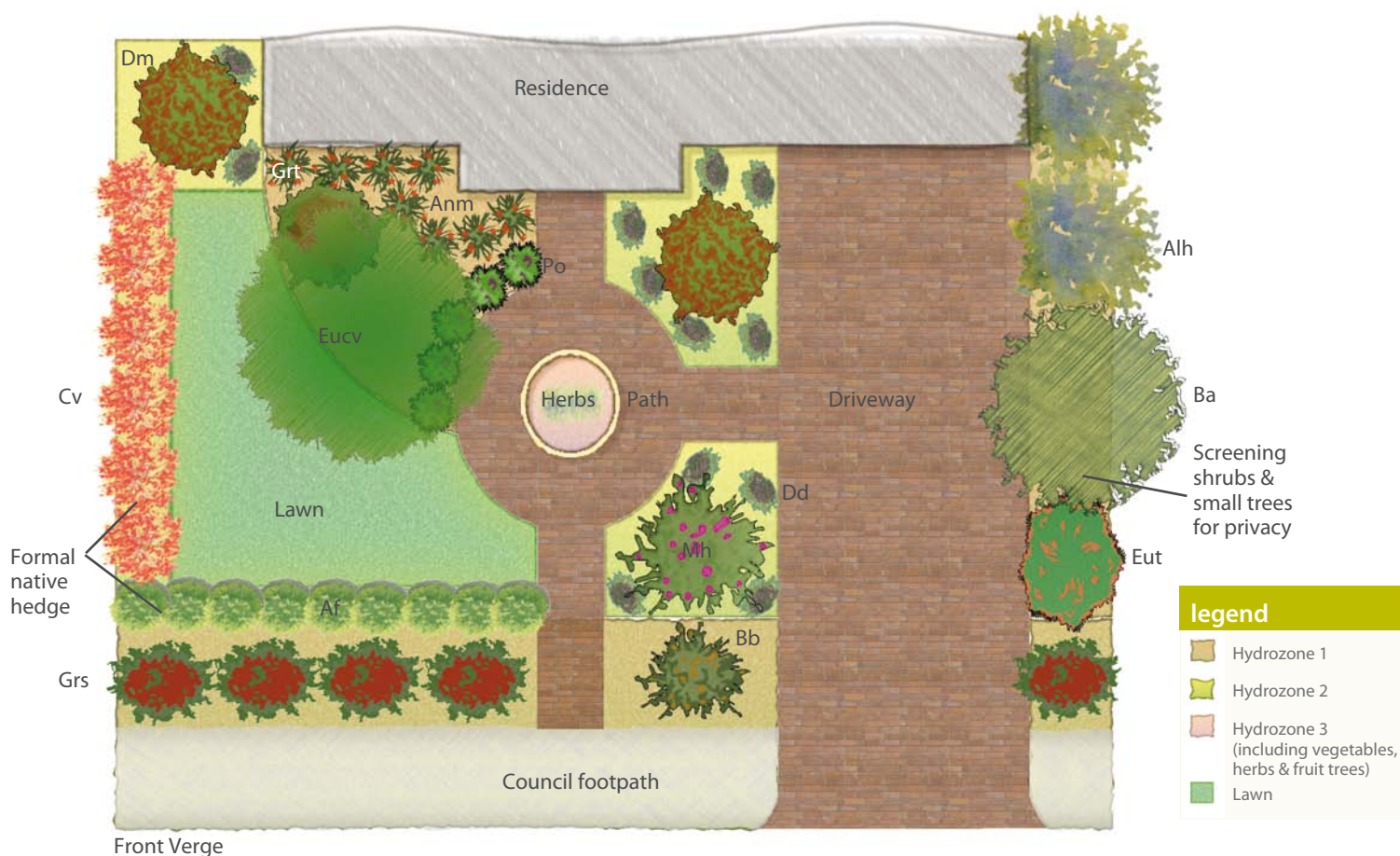
Hydrozoning is grouping plants with similar water needs together in an effort to be more water efficient. This is one of the most important tools to conserve water in the garden, and help save you money. You can choose plants to suit your garden and region with our Waterwise Plants for WA online directory.

Your local Waterwise Garden Centre can assist with plant selection and watering needs.

To find out your watering days visit our website.



how to design a waterwise native garden



legend

- Hydrozone 1
- Hydrozone 2
- Hydrozone 3 (including vegetables, herbs & fruit trees)
- Lawn

Designs provided by Josh Byrne & Associates
www.joshbyrne.com.au

plant species

Abrv Common Name

Ground Covers

Bb	Southern Blechnum Banksia
Dd	Dampiera
Dm	Mondorup Bell
Grs	Grevillea 'Star Burst'
Grt	Grevillea tenuiloba

Grasses/Strappy Leaf Plants

Anm	Kangaroo Paw
Po	Native Iris or Purple Flag

Botanical Name

<i>Banksia blechnifolia</i> *
<i>Dampiera diversifolia</i> *
<i>Darwinia macrostegia</i> *
<i>Grevillea saccata</i> *
<i>Grevillea tenuiloba</i> *
<i>Anigozanthos manglesii</i> *
<i>Pattersonia occidentalis</i> *

Abrv Common Name

Shrubs

Af	Dwarf Agonis
Alh	Native Hibiscus
Cv	Bottlebrush 'Little John'
Eut	Egg and Bacon Plant
Mh	Chenille Honey Myrtle

Trees

Ba	Ashby's Banksia
Eucv	Eucalyptus 'Snow Queen'

Botanical Name

<i>Agonis flexuosa</i> * ^Δ
<i>Alyogyne hakeifolia</i> *
<i>Callistemon viminalis</i>
<i>Eutaxia myrtifolia</i> *
<i>Melaleuca huegelii</i> *
<i>Banksia ashbyi</i> *
<i>Eucalyptus victrix</i> *

* These species are endemic to WA
^Δ Optional Species (not included in illustration)

more information

For professional advice, visit our website to find a Waterwise Specialist near you. They include Garden Designers, Garden Centres, Garden Irrigators, Irrigation Design Shops, Landscapers, Lawnmowing Contractors, Plumbers and Water Auditors. Waterwise Specialists have been trained especially to help you save water by providing specialist advice on waterwise products and services for your home and garden. Look for the Waterwise Approved and Smart Approved WaterMark symbols when choosing gardening products such as mulch, plants, greywater systems and sprinklers.



13 10 39 Waterwise Helpline
watercorporation.com.au