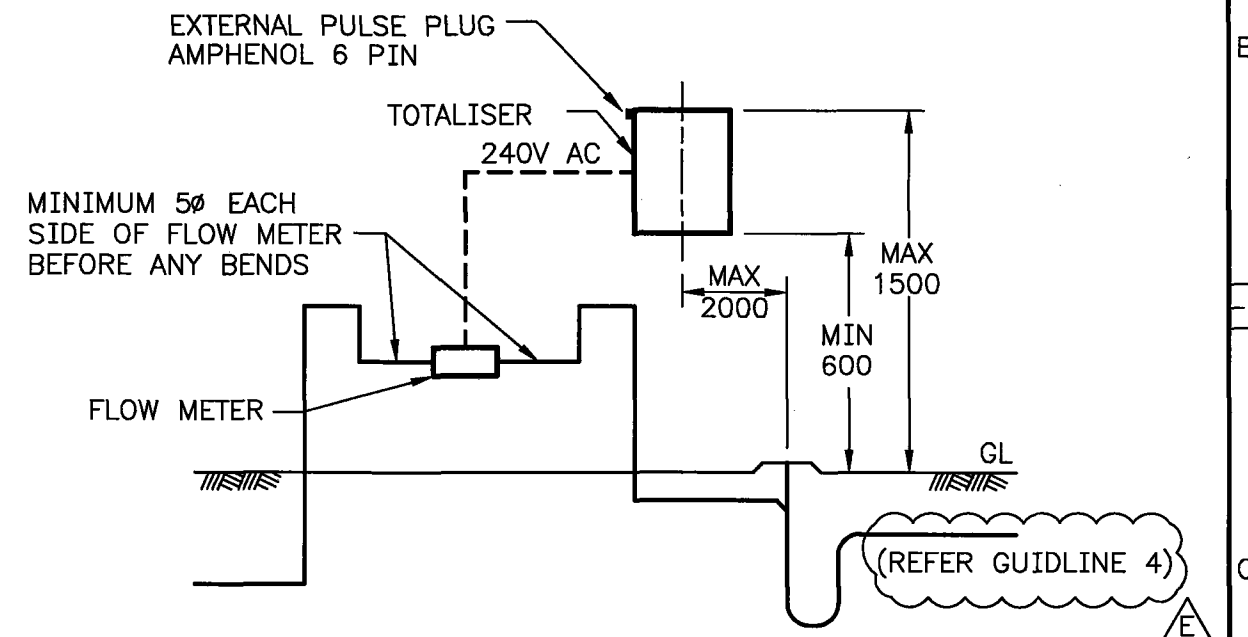
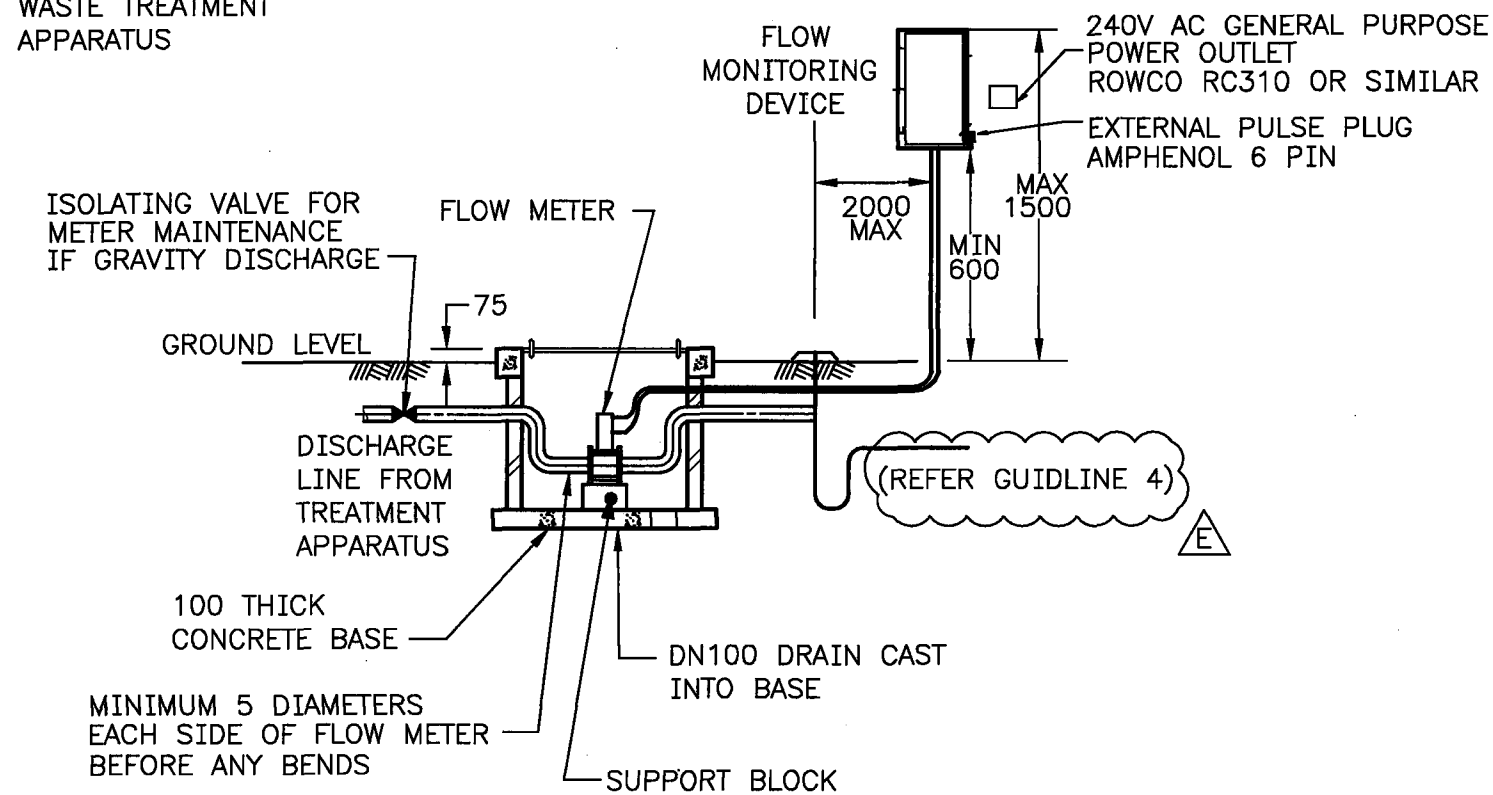
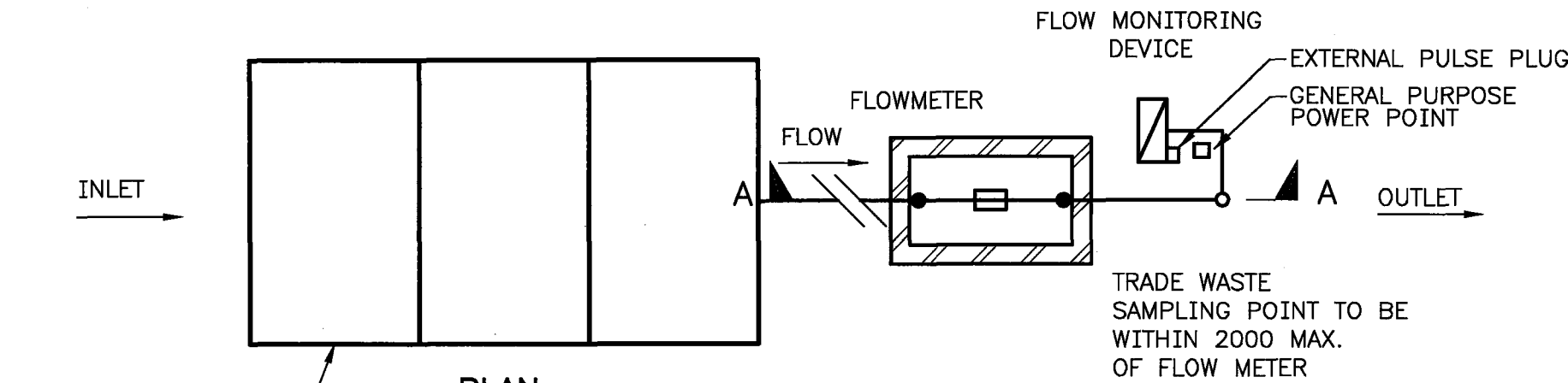


FOR MORE INFORMATION REFER TO OUR TRADE WASTE WEB PAGE  
<http://www.watercorporation.com.au/tradewaste>

**GUIDELINES**

1. PLEASE NOTE THIS DRAWING IS NOT A STAND ALONE DOCUMENT AND MUST BE READ IN CONJUNCTION WITH PUB 9, 11 & 16.
2. TRADE WASTE SAMPLING POINT TO BE WITHIN 2 METRES OF THE FLOWMETER TOTALISER.
3. UNLESS OTHERWISE APPROVED, ONLY ONE TRADE WASTE SAMPLE POINT TO BE PROVIDED FOR EACH BUSINESS.
4. REFER TO TYPICAL DRAWING HX33-11-30 TRADE WASTE SAMPLE POINTS FOR FURTHER DETAILS.
5. ALL MEASUREMENTS SHOWN ARE IN MILLIMETRES
6. ALL ASSOCIATED PLUMBING WORK IS TO COMPLY WITH WATER SERVICES LICENSING (PLUMBERS LICENSING AND PLUMBING STANDARDS) REGULATIONS 2000 AND LATEST VERSIONS OF AS/NZS 3500.1 AND AS/NZS 3500.2.



ISSUE	DATE	GRID	REVISION	DRN	REC	APPD
E	10/2016		SAMPLING POINT DETAIL REMOVED, NOTES AMENDED	BJ		MS
D	07/2016		WEBSITE DETAILS ADDED, GUIDELINES AMENDED	BJ	SJ	MS
C	01/2012		NOTE 2 MODIFIED	BJ	MS	AM
B	06/2009		NOTE 6 ADDED	RY	GC	AM

SCALE: DIAGRAMMATIC

DES CALC  
 DES CHD  
 DRN  
 A CLEAVER  
 Q.C. CHD  
 G CLEAVER

RECOMMENDED 01/08/2005  
 A MANZINGER  
 SENIOR ASSESSMENTS OFFICER  
 APPROVED 01/08/2005  
 J HEWITT  
 MANAGER, INDUSTRIAL WASTES



WATER CORPORATION  
 TYPICAL DRAWINGS FOR TRADE WASTE  
 TRADE WASTE MONITORING POINT  
 FORMERLY TYPICAL DRAWING 2000

ORIGINAL SHEET SIZE

A3

FILE	PLAN	CAD	ISSUE
PROJECT	HX33-20-00	E	MF2 3 NOV 2016