

# How to use ESInet

## Step by step guide

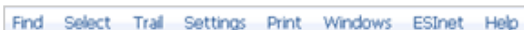
ESInet allows you to browse our mapping databases and to digitally extract an area into your CAD system for purposes of engineering design work.

### Process Steps

- Step 1: Register for your login and password
- Step 2: Find your area of interest on the map
- Step 3: Lay a trail round the area of interest
- Step 4: Export the area of interest
- Step 5: See the dashboard, save the extract

### How to find an area

1. Use the FIND menu, from the top menu

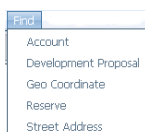


2. Navigate with the TOOLBAR at the left of the screen



### Find Menu

Situated in the Main Menu, you can use the Find to locate:



### Development Applications -

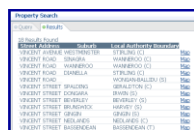
New development applications to the Western Australian Planning Commission can be identified by the reference plan number.

**Geo Coordinate:** using MGA or Lat and Long

**Reserve:** using a known references (eg: 36054)

**Street Address:** type a street name eg: Vincent

No other suffix or words are needed. Click enter and select the Map from a list if required. Use the Pan tool to move the map more precisely.



### The toolbar



Selections are highlighted (one at a time) by clicking on that item. All items are toggled i.e. click once to select or de-select.



**Select** The Select button enables the user to select a single object by clicking on that object, or to select multiple-objects by using the drag feature.



**Pan** Click and drag the mouse and the current map view is panned in the direction you dragged it.



### Zoom in and out

Click anywhere on the window to Zoom In or Zoom Out the current map. The returned map is then centred to that point.

Note: The Zoom In or Zoom Out features useful quadrant tools:

**1) Zoom Out** - Click and drag the mouse up and to the right to create a window.

Release the mouse button and the window is zoomed out.

**2) Zoom In** - Click and drag the mouse down and to the right to create a window. Release the mouse button and the window is zoomed in.

**3) Previous Map** - Drag towards the top left and the previous map is displayed.

**4) Cancel** - Drag towards bottom left corner will return previous Map

Previous Map	Zoom Out
Cancel	Zoom In



**View Previous Maps** Click on the Previous Map button on the Toolbar and the previous map view is displayed.

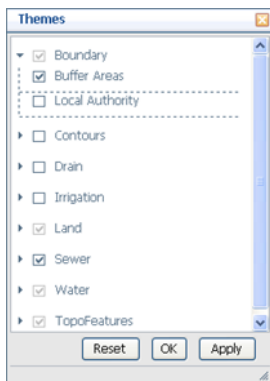


**Reset State Map** Click on the Reset State Map button and the default WA State Map is displayed.

## Themes

The themes list turns on/off the layers of data that can be displayed on the screen.

- Themes are listed in categories.
- Category headings can expand so that individual data layers may be ticked ON or OFF as needed.
- A tick next to the category Heading turns all the category layers ON.
- Click on the triangle to expand the list.
- Click on an individual layer box to turn only that layer ON/OFF
- To implement Theme selections click OK or Apply.
- Click reset to apply a typical theme base.



### Handy tips:

- The more themes turned on—the more information is being requested—the slower the response times of the application. So only turn on what you need to see.
- A theme layer is only displayed when it is turned on in the theme list and in visual scale. Themes will turn off when the scale expands beyond usefulness.
- The high detail menu option overrides the themes turning off at a higher scale and is useful for showing macro views of boundary and land use colour or coverage information.
- Exports are not affected by themes selected.

## Basic exporting

Please refer to the [exporting brochure](#) for comprehensive instructions.

## Basic steps

Start with the area you want to export, displayed on screen.



### Step 1: lay a trail

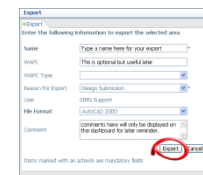
- Click on the trail tool in the toolbar.
- Click slowly a series of points around the area that you would like to export.
- The trail does not have to be closed, but does surround the area to be converted to the CAD file.
- 250,000m<sup>2</sup> (500x500) is the automated limit for an area. Above this will require manual approval.



Trail around lot 64 & 3

### Step 2: export the area

- Click the drop down menu category called ESInet, then Export Area.
- In the Export Window window complete and click the Export Button to send the selected area to be converted into a CAD file.
- The conversion process should take around 5 minutes. An email will be sent to you to advise that the export is ready to pick up.



### Step 3: open the dashboard, save the file

- Re-enter the ESInet application after getting the email, and using the ESInet menu above, select the View Dashboard option.
- The Dashboard lists exported job requests. Double click on the line item showing your job to open the Project details and export zip file.
- Right mouse click on the exported Zip file and "save target to" your hardware memory.
- Open your exported file into your CAD system to view.