

Wastewater upgrade project in the City of Armadale



28/06/2019

Dear Customer,

As you know, Water Corporation appointed contractor Georgiou are working to construct a new wastewater main in the City of Armadale. This wastewater main will help cater for future growth in the area for decades to come.

Work is currently taking place along Keane Road between Gracefield Boulevard and Garinga Road and Keane Road between Antsey Road and Allen Road.

Upcoming work

To ensure the safety of school students and the general public, work will take place at the front of **Harrisdale Senior High School** during the July 2019 school holidays.

Fencing will be erected on the 6 July 2019 between **Laverton Crescent and Skeet Road**. This work will take around **two weeks** to complete.

Fencing will be erected on the north-east side of Keane Road. See map over the page.

Work times

Work will be carried out Monday to Saturday and Sundays as required between 7am and 5pm.

Project update

Work is currently taking place along:

- Keane Road between Gracefield Boulevard and Garinga Road. Work in this section is due for completion by **16 August 2019**.
- Keane Road between Antsey Road and Allen Road. Work in this section is due for completion by **9 July 2019**.
- Keane Road between Garinga Road and Exchange Roundabout. Work in this section is due for completion by **16 August 2019**.

The full project is scheduled for completion at the **end of 2019**.

Temporary water supply interruptions

There may be a short interruption to your water supply while we install the wastewater pipeline. We do our best to ensure scheduled interruptions occur when demand for water is at the lowest and we will notify you before it happens.

Reinstatement

Our construction method being open excavation, will mean unavoidable impact to roads and verges. Once the new pipe is in the ground all open trenches will be backfilled, compacted and reinstated.

Water Corporation follows a thorough reinstatement process to ensure all impacted areas are replaced like for like, where practically possible. We work closely with the City of Armadale and residents to ensure all reinstatements are carried out to an acceptable and high standard.



Who to contact

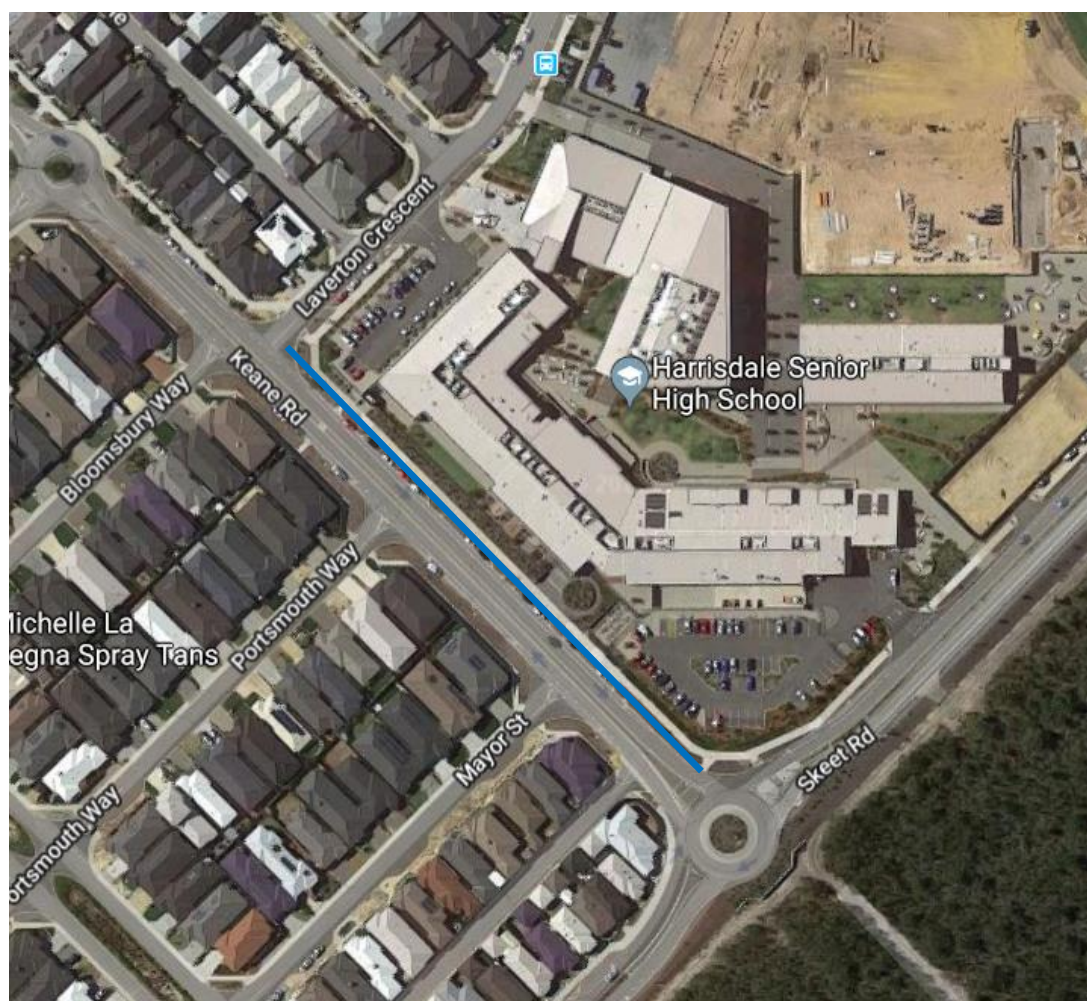
If you have an enquiry or issue requiring immediate actioning onsite, i.e. property access, please contact **Georgiou Project Manager, David Bradley** on **0438 805 921**

For general enquiries please contact Water Corporation Community Engagement Advisor Kym Walker on **9420 3527** weekdays during business hours. Alternatively, email **community.engagement@watercorporation.com.au**

For project information, please visit www.watercorporation.com.au/balannup.

To report a fault, emergency or security issue, please call **13 13 75** (24 hours).

Map of area of work (not to scale):



Legend

New Pipe line 

We appreciate your cooperation and understanding while this essential work is carried out, and apologise for any inconvenience caused.